



# LAMAXU

Smarter Monitoring for IBM MQ  
by QM Pty Ltd



# LAMAXU (For Monitoring IBM MQ<sup>®</sup>)

- ✓ IBM MQ<sup>®</sup> is the leading middleware messaging application used by many organizations.
- ✓ MQ is entrusted daily by banks to guarantee the delivery of critical data such as SWIFT payments that may be moving huge amount of money.
- ✓ The critical part IBM MQ<sup>®</sup> plays means that failure to respond quickly when an error occurs could cost millions and cause reputational damage with customers.
- ✓ Most leading enterprise monitoring solutions include the ability to monitor IBM MQ<sup>®</sup>, but many are either very expensive have very limited functionality. This means errors can still be occurring even though monitoring is reporting nothing is wrong.

# LAMAXU What is it?



LAMAXU is a lightweight Java agent that can run either alongside your queue manager or remotely on another host.

LAMAXU can centrally monitor your entire enterprise without the need to deploy, and manage large numbers of agents.

LAMAXU can quickly extend your enterprise monitoring solution by allowing it to monitor the full range of MQ metrics using one of the standard consumable data formats below.

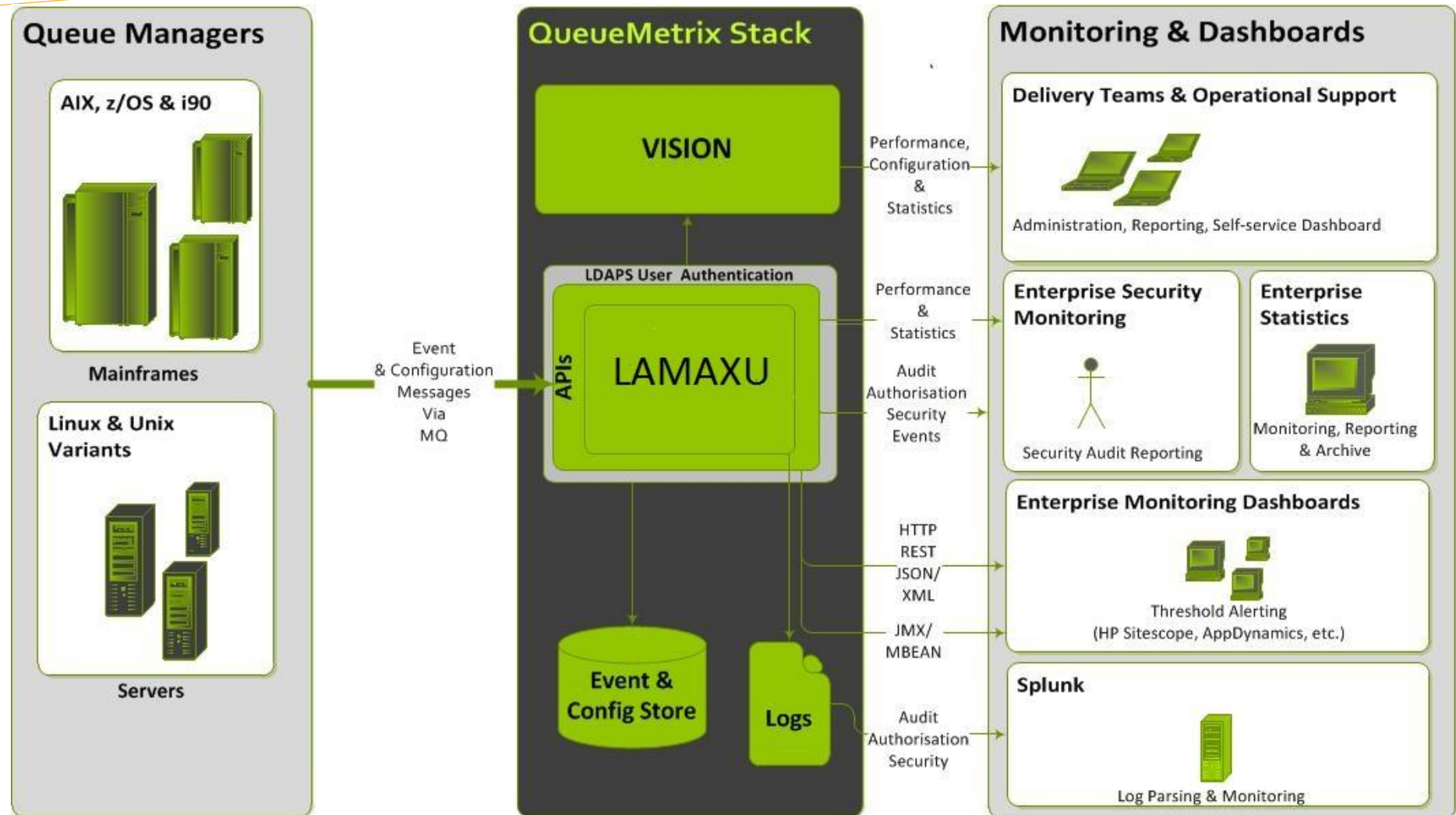
- ✓ Java JMX Mbeans
- ✓ HTTP REST web service (*XML and JSON*)
- ✓ Log files (*XML and JSON*)

# LAMAXU Aggregated Monitoring

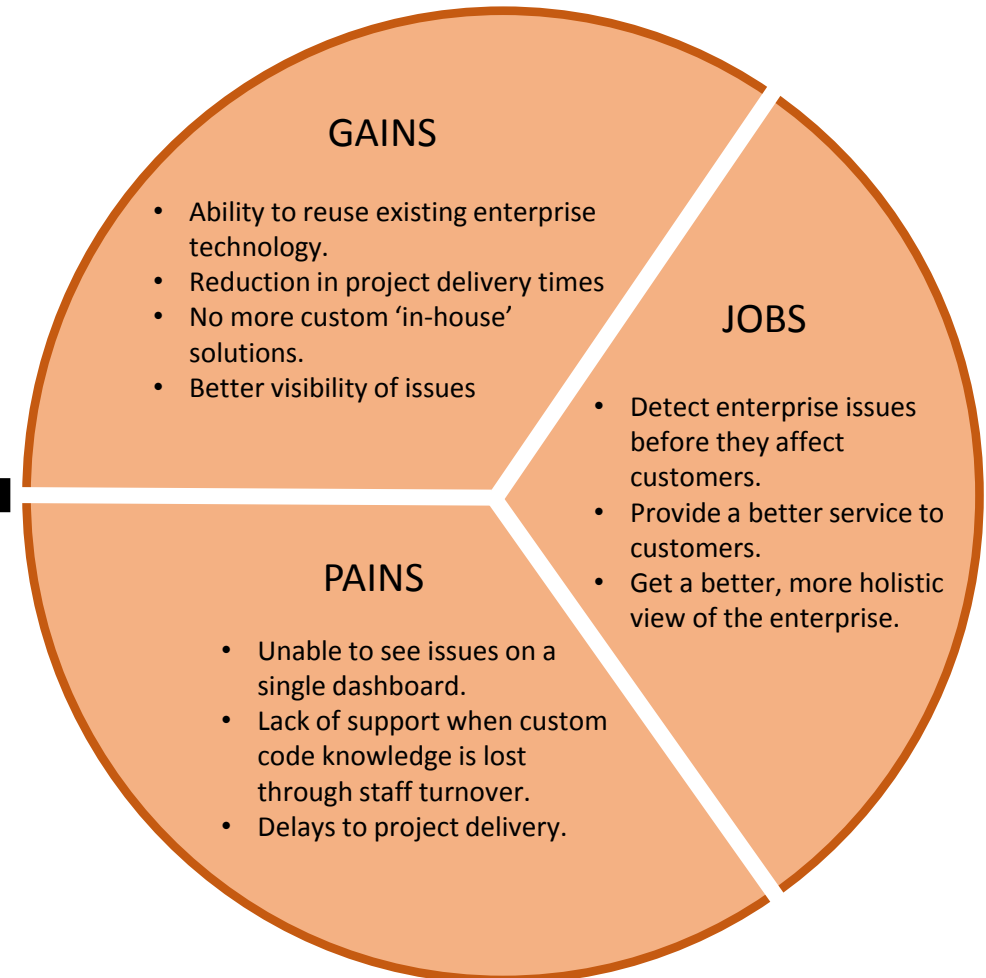
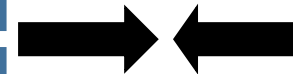
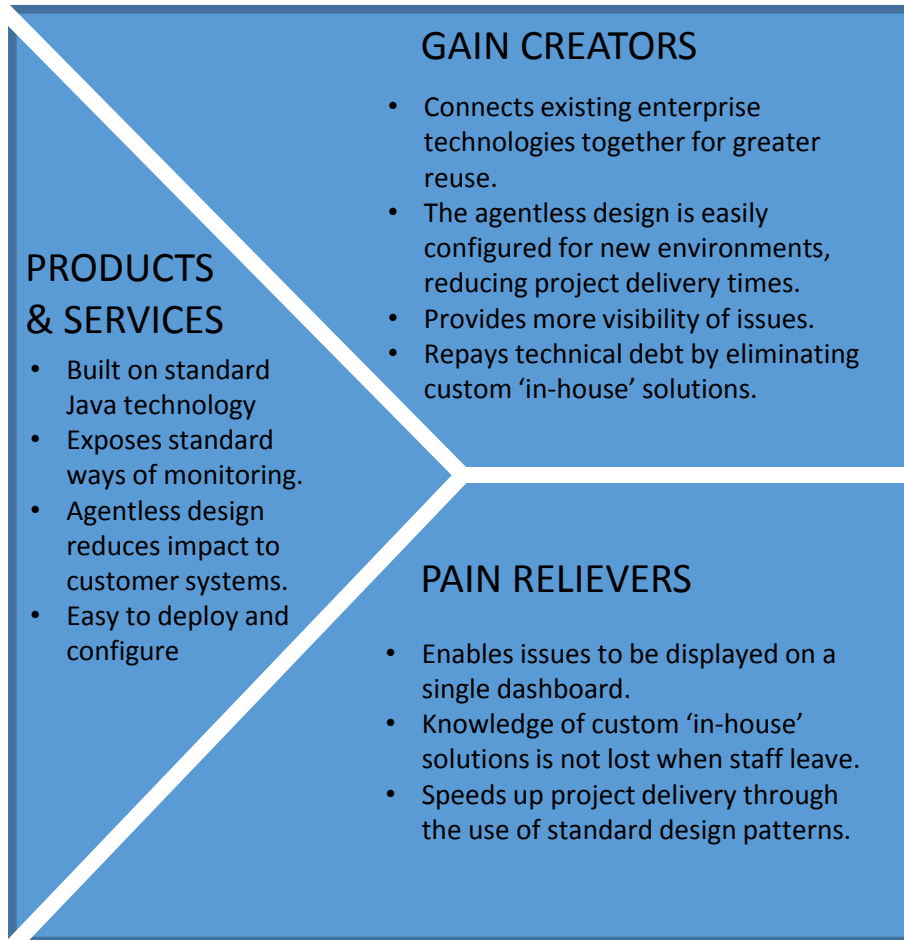


LAMAXU has been purposely designed to fit the gap between IBM MQ<sup>®</sup> and most leading enterprise monitoring platforms. MQ<sup>®</sup> metrics are exposed in different ways to maximize the reuse of your enterprise services and save you money.

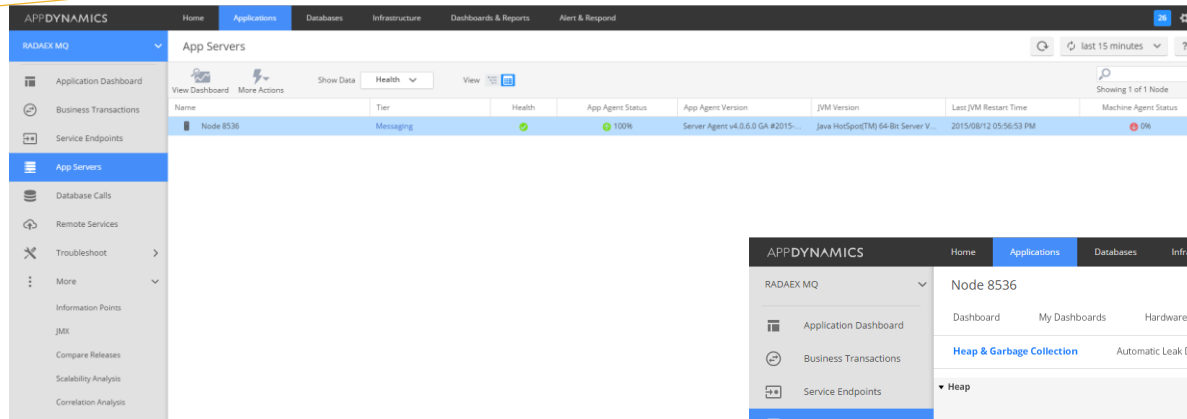
# LAMAXU & Your Enterprise



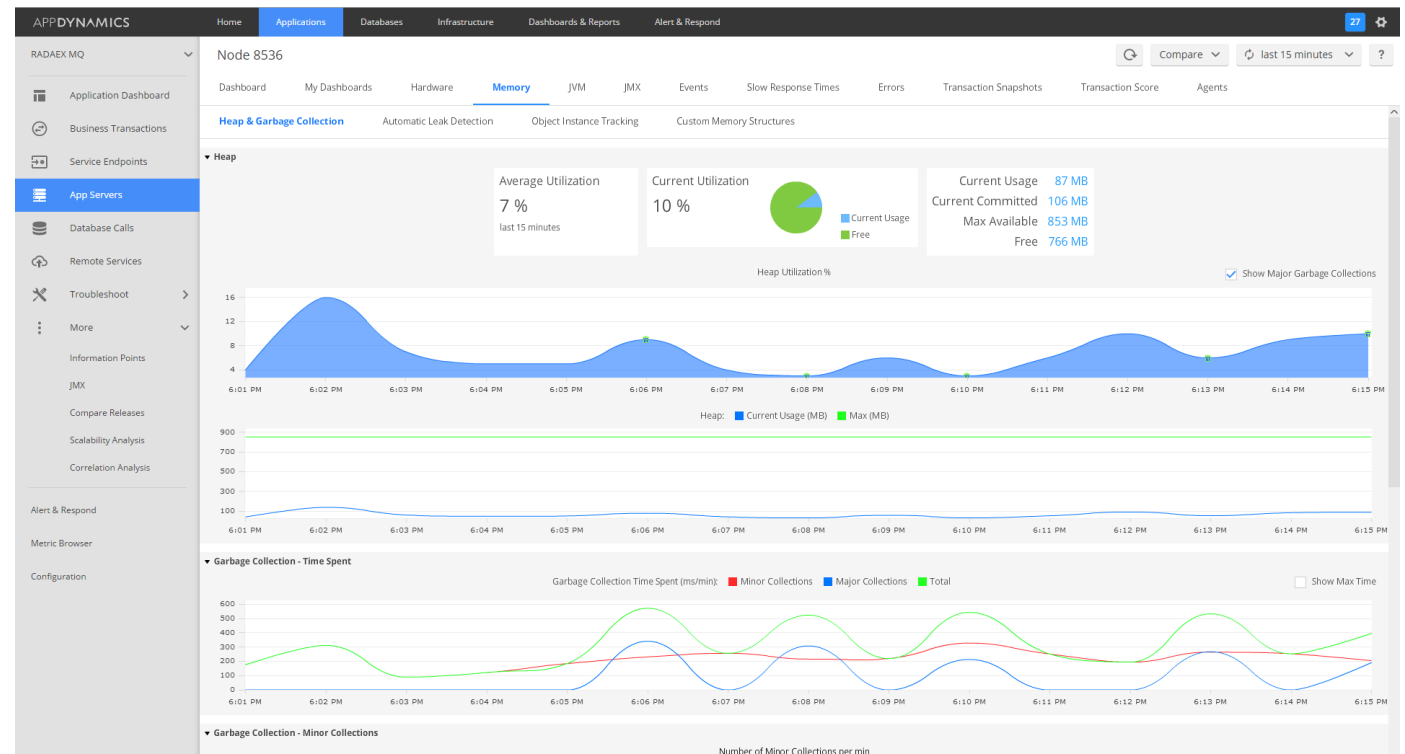
# LAMAXU Value Proposition



# LAMAXU Agents & AppDynamics



**LAMAXU** allows AppDynamics to monitor all MQ metrics just like a Java Application Server.



# LAMAXU & AppDynamics *Live Graph*

The screenshot displays the AppDynamics JMX monitoring interface. The left sidebar shows a navigation menu with categories like Application Dashboard, Business Transactions, Service Endpoints, App Servers, Database Calls, Remote Services, Troubleshoot, More, Information Points, JMX, Compare Releases, Scalability Analysis, Correlation Analysis, Alert & Respond, Metric Browser, and Configuration. The main content area is titled 'JMX' and shows a tree view of JMX objects. The selected object is 'PERF.CHANNEL' under 'DEMO.CHANNEL.STATUS'. The right pane shows the 'MBean' details for 'DEMO:type=CHANNEL\_STATUS,name=PERF.CHANNEL'. It includes a table of attributes and a live graph for the 'BYTSRCVD' attribute.

Name	Type	Value	Editable	Live Graph
BTESSENT	long	81915452	Yes	
BUFSRRCD	long	59989	Yes	
BUFSSENT	long	60411	Yes	
BYTSRCVD	long	7686852	Yes	
CHANNEL	java.lang.String	PERF.CHANNEL	Yes	
CHLTYPE	long	1011	Yes	
CHSTADA	java.lang.String	2015-08-12	Yes	

**Live Graph for Attribute: BYTSRCVD**

The live graph shows the value of the BYTSRCVD attribute over time. The y-axis ranges from 0 to 160.0m. The x-axis shows time from 6:13 PM to 6:14 PM. The graph shows a steady increase in the value of the attribute, reaching approximately 160.0m at 6:14 PM.

Give AppDynamics the ability to see queue status information in real time



# LAMAXU & AppDynamics *Live Graph*

The screenshot displays the AppDynamics web interface for monitoring JMX metrics. The left sidebar contains navigation options such as Application Dashboard, Business Transactions, Service Endpoints, App Servers, Database Calls, Remote Services, Troubleshoot, More, Information Points, JMX, Compare Releases, Scalability Analysis, Correlation Analysis, Alert & Respond, Metric Browser, and Configuration. The main content area is titled 'JMX' and shows a tree view of monitored objects under 'Node 8536'. The selected object is 'PERFQ' under the 'QUEUE\_STATUS' domain. The right pane displays the 'MBean' details for 'DEMO:type=QUEUE\_STATUS,name=PERFQ', including a table of attributes and a live graph for the 'CURDEPTH' attribute.

**MBean Object Name:** DEMO:type=QUEUE\_STATUS,name=PERFQ

Name	Type	Value	Editable	Live Graph
CURDEPTH	long	0	Yes	
IPPROCS	long	0	Yes	
LGETDATE	java.lang.String	2015-08-12	Yes	
LGETTIME	java.lang.String	18.06.46	Yes	
LPUTDATE	java.lang.String	2015-08-12	Yes	
LPUTTIME	java.lang.String	18.04.24	Yes	
MEDIALOG	java.lang.String		Yes	

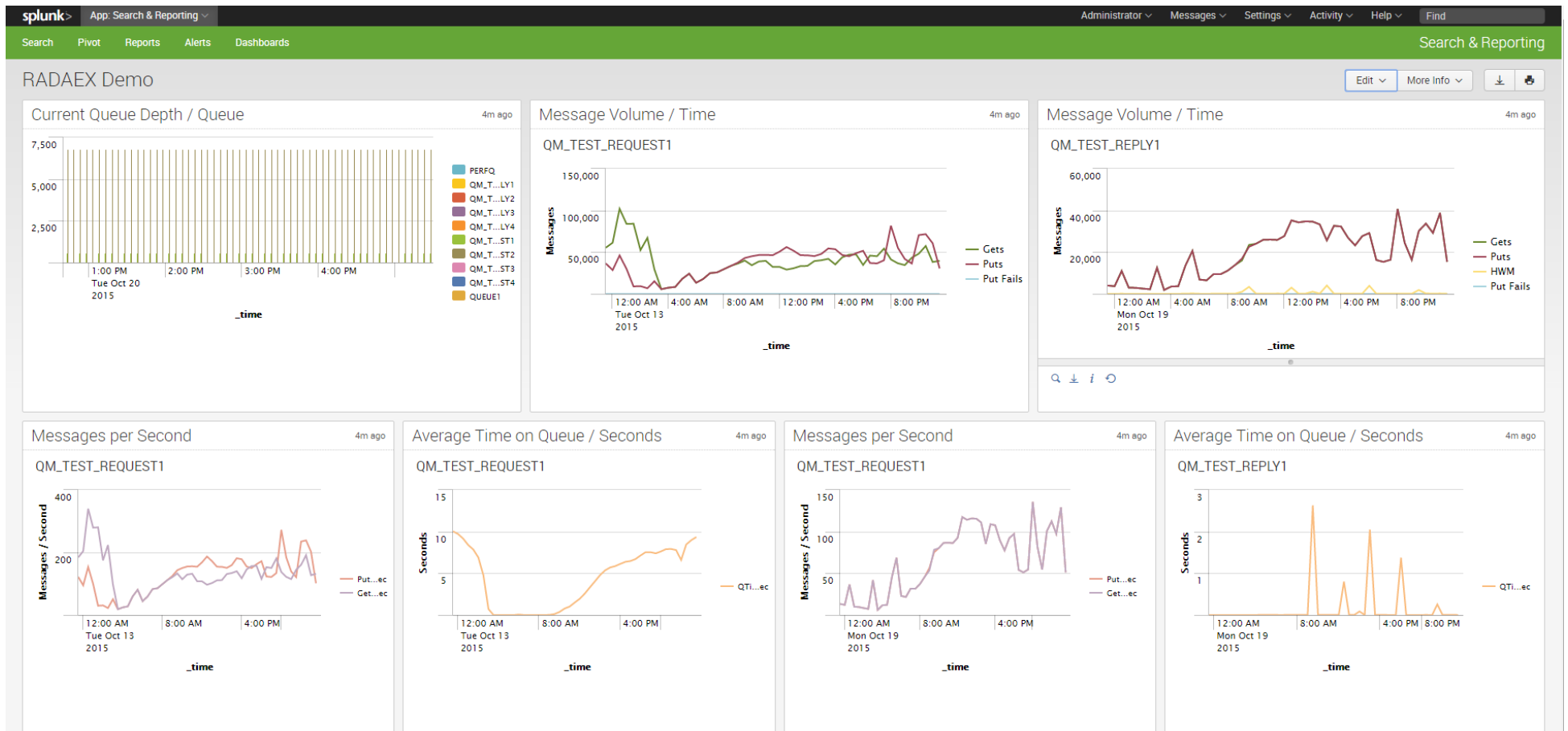
**Live Graph for Attribute: CURDEPTH**

The live graph shows the CURDEPTH attribute value over time from 6:02 PM to 6:10 PM. The y-axis ranges from 0 to 40.0k. The graph shows a significant peak in activity around 6:05 PM, reaching approximately 40.0k.



# LAMAXU & SPLUNK®

**LAMAXU** allows SPLUNK to natively index all available MQ metrics, and statistics, using XML or JSON formatted files.



**THANK YOU**